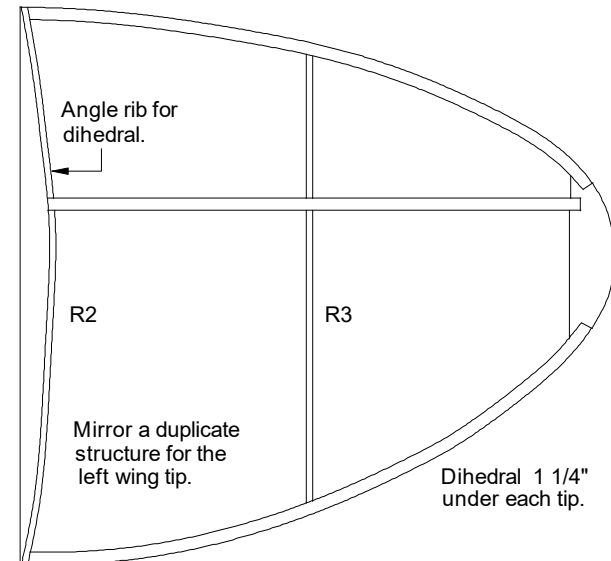
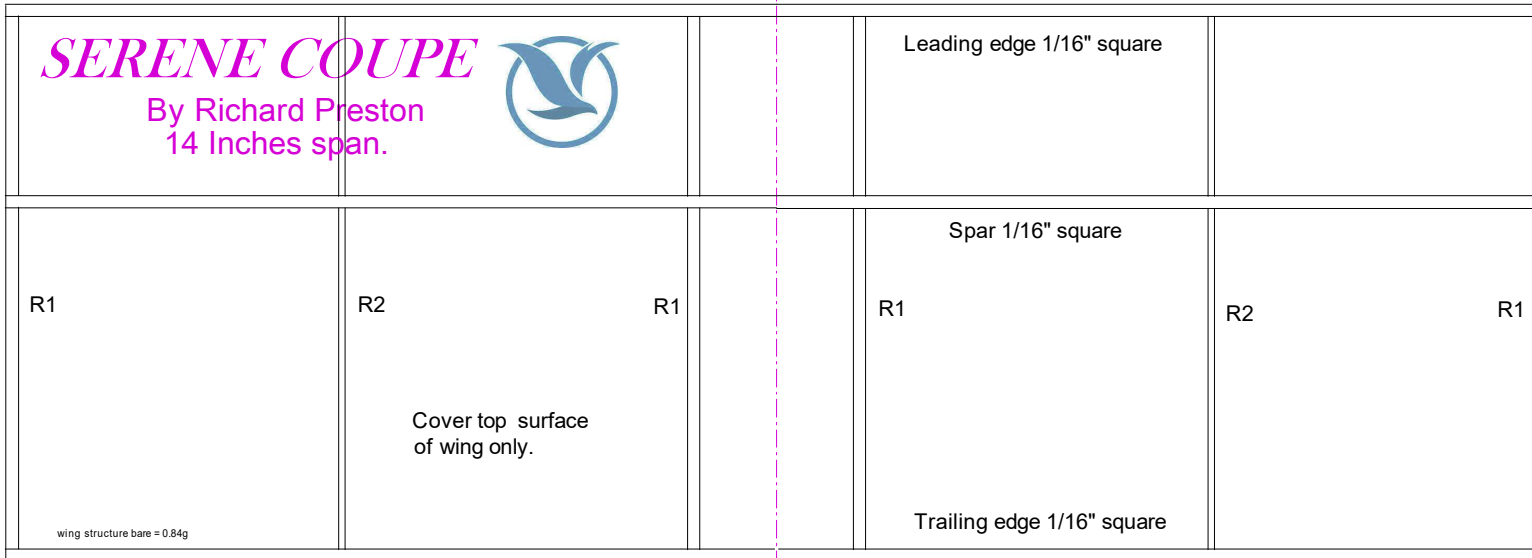
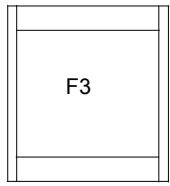
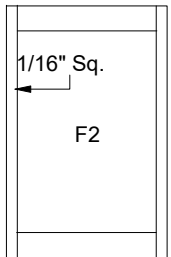
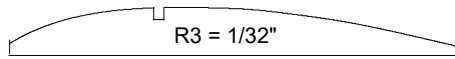
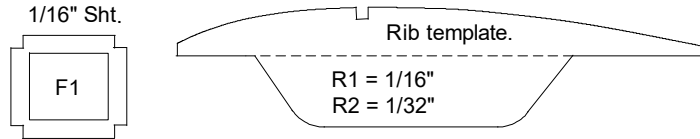


SERENE COUPE

By Richard Preston
14 Inches span.

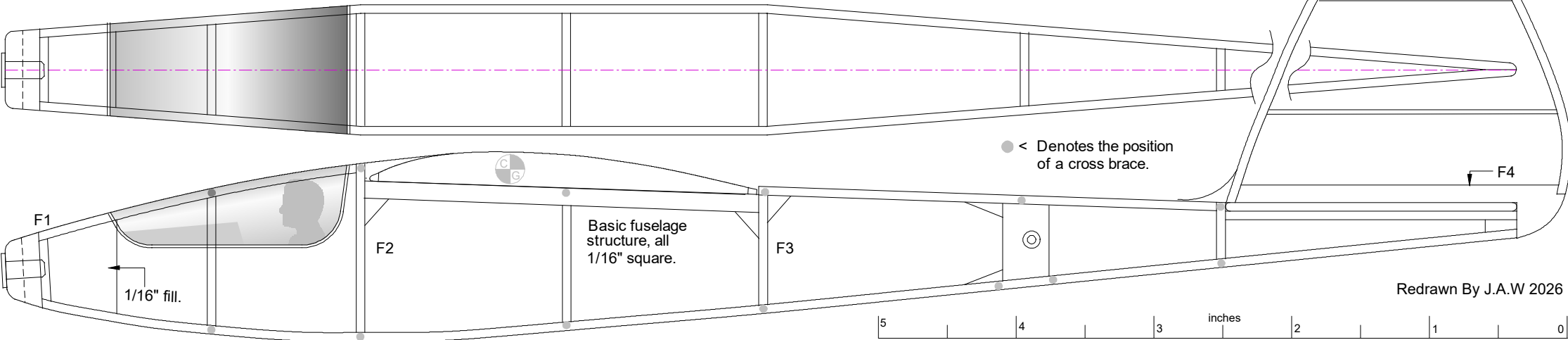
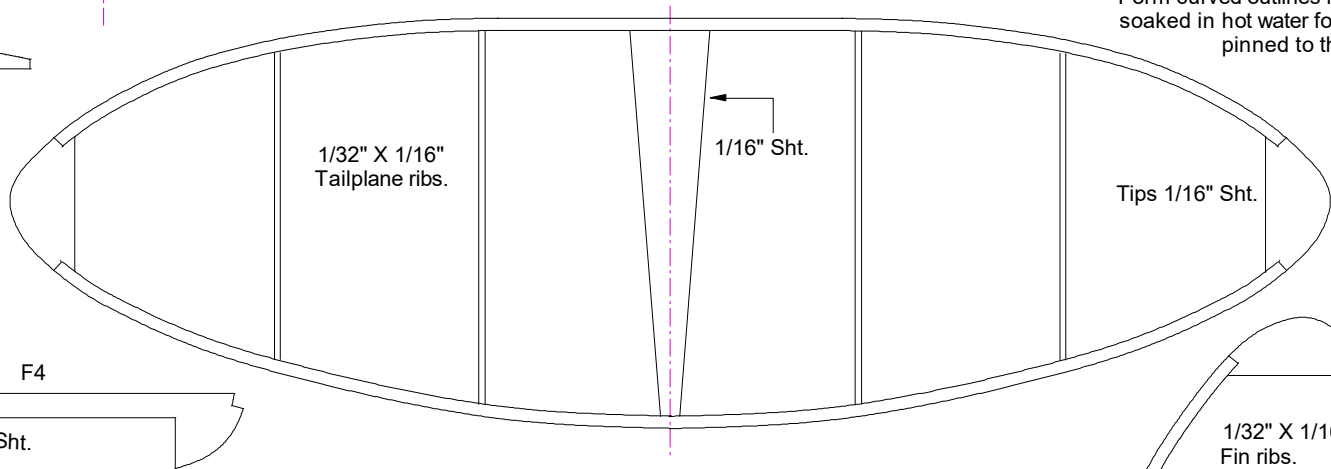


Form curved outlines from 1/16" Sq soaked in hot water for 30 min then pinned to the plan to dry.



Original used a 4 1/2" prop and a 10" loop of 0.060 - 0.070 thou rubber.

1/16" X 1/8"



Redrawn By J.A.W 2026